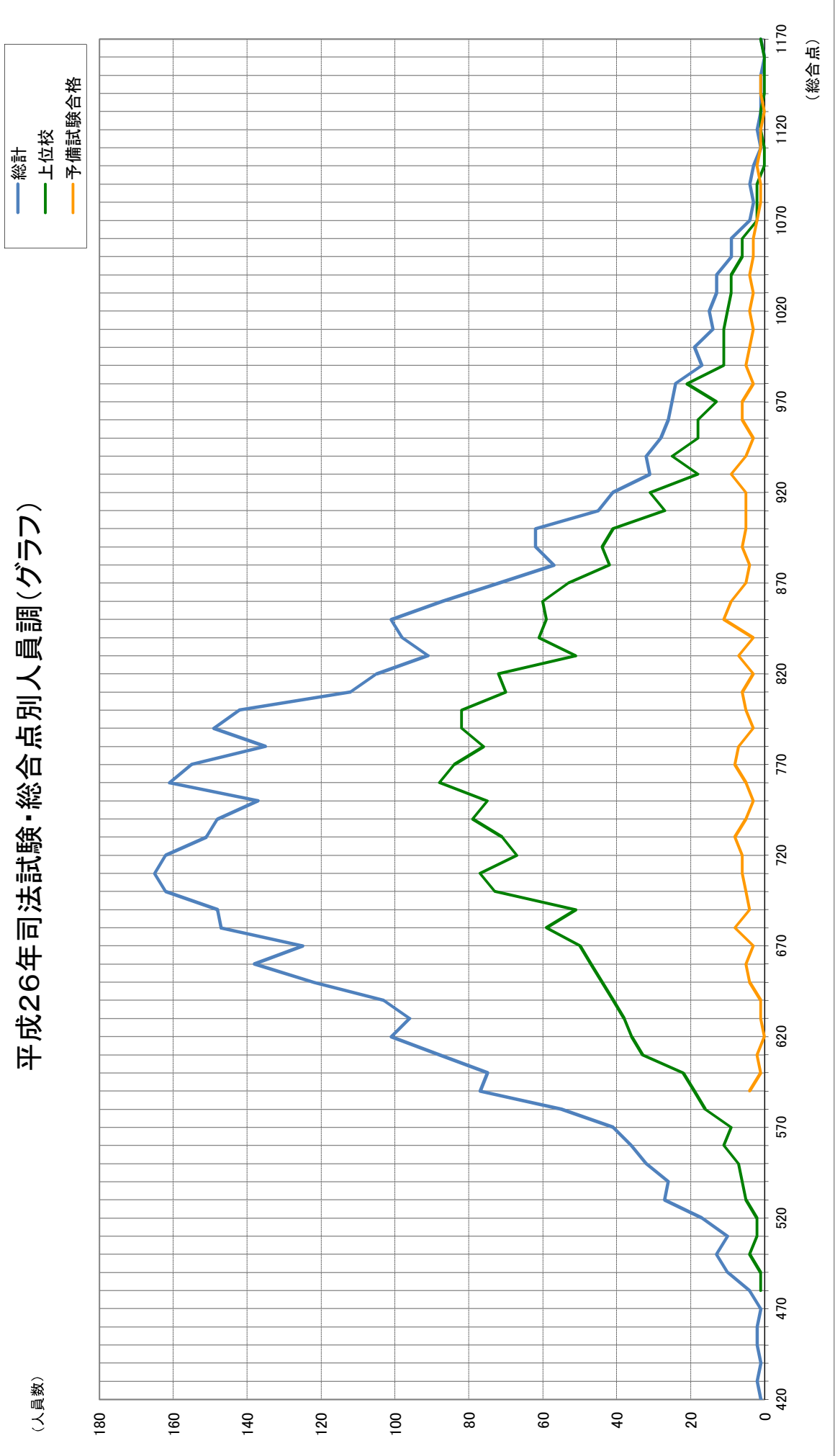


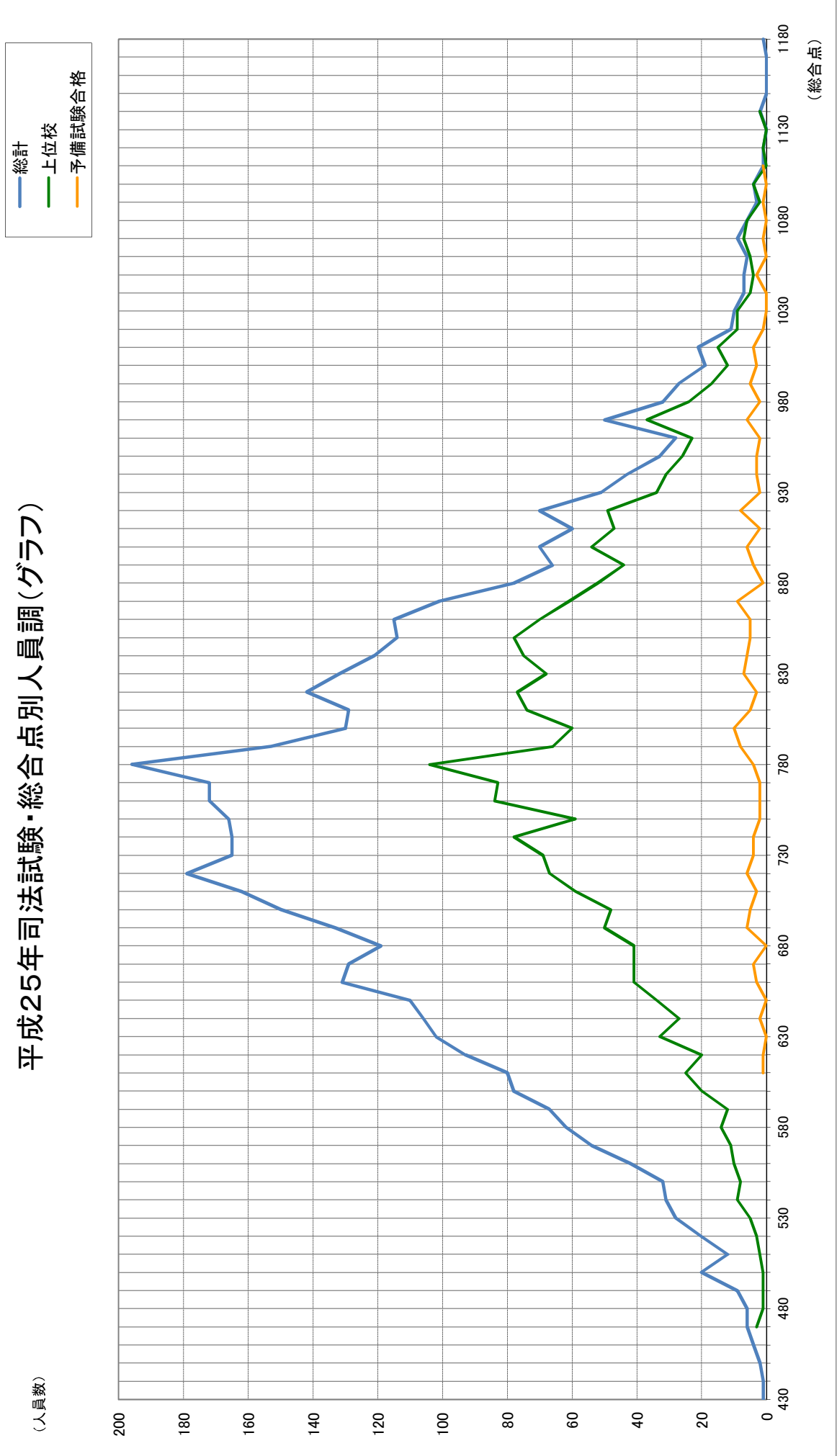
平成26年司法試験・総合点別人員調(グラフ)



平成26年 司法試験 総合点別人員調  
 (予備試験合格者、合格率が全体の合格率以上の法科大学院15校の受験者(上位校))

総合点	総計				予備試験合格				上位校			
	人員	人員割合	累計	累計割合	人員	人員割合	累計	累計割合	人員	人員割合	累計	累計割合
1170	1	0.02%	1	0.02%	0	0.00%	0	0.00%	1	0.05%	1	0.05%
1160	0	0.00%	1	0.02%	0	0.00%	0	0.00%	0	0.00%	1	0.05%
1150	1	0.02%	2	0.05%	1	0.43%	1	0.43%	0	0.00%	1	0.05%
1140	1	0.02%	3	0.07%	1	0.43%	2	0.85%	0	0.00%	1	0.05%
1130	1	0.02%	4	0.09%	0	0.00%	2	0.85%	1	0.05%	2	0.09%
1120	2	0.05%	6	0.14%	1	0.43%	3	1.28%	1	0.05%	3	0.14%
1110	1	0.02%	7	0.16%	1	0.43%	4	1.71%	0	0.00%	3	0.14%
1100	3	0.07%	10	0.23%	2	0.85%	6	2.56%	0	0.00%	3	0.14%
1090	4	0.09%	14	0.32%	1	0.43%	7	2.99%	2	0.09%	5	0.23%
1080	3	0.07%	17	0.39%	1	0.43%	8	3.42%	2	0.09%	7	0.32%
1070	4	0.09%	21	0.48%	2	0.85%	10	4.27%	2	0.09%	9	0.42%
1060	9	0.20%	30	0.68%	3	1.28%	13	5.56%	6	0.28%	15	0.69%
1050	9	0.20%	39	0.89%	3	1.28%	16	6.84%	6	0.28%	21	0.97%
1040	13	0.30%	52	1.18%	4	1.71%	20	8.55%	9	0.42%	30	1.39%
1030	13	0.30%	65	1.48%	3	1.28%	23	9.83%	9	0.42%	39	1.80%
1020	15	0.34%	80	1.82%	4	1.71%	27	11.54%	10	0.46%	49	2.26%
1010	14	0.32%	94	2.14%	3	1.28%	30	12.82%	11	0.51%	60	2.77%
1000	19	0.43%	113	2.57%	4	1.71%	34	14.53%	11	0.51%	71	3.28%
990	17	0.39%	130	2.96%	5	2.14%	39	16.67%	11	0.51%	82	3.79%
980	24	0.55%	154	3.50%	3	1.28%	42	17.95%	21	0.97%	103	4.76%
970	25	0.57%	179	4.07%	6	2.56%	48	20.51%	13	0.60%	116	5.36%
960	26	0.59%	205	4.66%	6	2.56%	54	23.08%	18	0.83%	134	6.19%
950	28	0.64%	233	5.30%	3	1.28%	57	24.36%	18	0.83%	152	7.02%
940	32	0.73%	265	6.03%	5	2.14%	62	26.50%	25	1.16%	177	8.18%
930	31	0.71%	296	6.73%	9	3.85%	71	30.34%	18	0.83%	195	9.01%
920	41	0.93%	337	7.67%	5	2.14%	76	32.48%	31	1.43%	226	10.44%
910	45	1.02%	382	8.69%	5	2.14%	81	34.62%	27	1.25%	253	11.69%
900	62	1.41%	444	10.10%	5	2.14%	86	36.75%	41	1.89%	294	13.59%
890	62	1.41%	506	11.51%	6	2.56%	92	39.32%	44	2.03%	338	15.62%
880	57	1.30%	563	12.81%	4	1.71%	96	41.03%	42	1.94%	380	17.56%
870	72	1.64%	635	14.44%	5	2.14%	101	43.16%	53	2.45%	433	20.01%
860	87	1.98%	722	16.42%	9	3.85%	110	47.01%	60	2.77%	493	22.78%
850	101	2.30%	823	18.72%	11	4.70%	121	51.71%	59	2.73%	552	25.51%
840	98	2.23%	921	20.95%	3	1.28%	124	52.99%	61	2.82%	613	28.33%
830	91	2.07%	1,012	23.02%	7	2.99%	131	55.98%	51	2.36%	664	30.68%
820	105	2.39%	1,117	25.41%	3	1.28%	134	57.26%	72	3.33%	736	34.01%
810	112	2.55%	1,229	27.96%	6	2.56%	140	59.83%	70	3.23%	806	37.25%
800	142	3.23%	1,371	31.19%	5	2.14%	145	61.97%	82	3.79%	888	41.04%
790	149	3.39%	1,520	34.58%	3	1.28%	148	63.25%	82	3.79%	970	44.82%
780	135	3.07%	1,655	37.65%	7	2.99%	155	66.24%	76	3.51%	1,046	48.34%
770	155	3.53%	1,810	41.17%	8	3.42%	163	69.66%	84	3.88%	1,130	52.22%
760	161	3.66%	1,971	44.84%	5	2.14%	168	71.79%	88	4.07%	1,218	56.28%
750	137	3.12%	2,108	47.95%	3	1.28%	171	73.08%	75	3.47%	1,293	59.75%
740	148	3.37%	2,256	51.32%	5	2.14%	176	75.21%	79	3.65%	1,372	63.40%
730	151	3.43%	2,407	54.75%	8	3.42%	184	78.63%	71	3.28%	1,443	66.68%
720	162	3.69%	2,569	58.44%	6	2.56%	190	81.20%	67	3.10%	1,510	69.78%
710	165	3.75%	2,734	62.19%	6	2.56%	196	83.76%	77	3.56%	1,587	73.34%
700	162	3.69%	2,896	65.88%	5	2.14%	201	85.90%	73	3.37%	1,660	76.71%
690	148	3.37%	3,044	69.24%	4	1.71%	205	87.61%	51	2.36%	1,711	79.07%
680	147	3.34%	3,191	72.59%	8	3.42%	213	91.03%	59	2.73%	1,770	81.79%
670	125	2.84%	3,316	75.43%	3	1.28%	216	92.31%	50	2.31%	1,820	84.10%
660	138	3.14%	3,454	78.57%	5	2.14%	221	94.44%	47	2.17%	1,867	86.28%
650	122	2.78%	3,576	81.35%	4	1.71%	225	96.15%	44	2.03%	1,911	88.31%
640	103	2.34%	3,679	83.69%	1	0.43%	226	96.58%	41	1.89%	1,952	90.20%
630	96	2.18%	3,775	85.87%	1	0.43%	227	97.01%	38	1.76%	1,990	91.96%
620	101	2.30%	3,876	88.17%	0	0.00%	227	97.01%	36	1.66%	2,026	93.62%
610	88	2.00%	3,964	90.17%	2	0.85%	229	97.86%	33	1.52%	2,059	95.15%
600	75	1.71%	4,039	91.88%	1	0.43%	230	98.29%	22	1.02%	2,081	96.16%
590	77	1.75%	4,116	93.63%	4	1.71%	234	100%	19	0.88%	2,100	97.04%
580	55	1.25%	4,171	94.88%	0	0.00%	234	100%	16	0.74%	2,116	97.78%
570	41	0.93%	4,212	95.81%	0	0.00%	234	100%	9	0.42%	2,125	98.20%
560	36	0.82%	4,248	96.63%	0	0.00%	234	100%	11	0.51%	2,136	98.71%
550	32	0.73%	4,280	97.36%	0	0.00%	234	100%	7	0.32%	2,143	99.03%
540	26	0.59%	4,306	97.95%	0	0.00%	234	100%	6	0.28%	2,149	99.31%
530	27	0.61%	4,333	98.57%	0	0.00%	234	100%	5	0.23%	2,154	99.54%
520	17	0.39%	4,350	98.95%	0	0.00%	234	100%	2	0.09%	2,156	99.63%
510	10	0.23%	4,360	99.18%	0	0.00%	234	100%	2	0.09%	2,158	99.72%
500	13	0.30%	4,373	99.48%	0	0.00%	234	100%	4	0.18%	2,162	99.91%
490	10	0.23%	4,383	99.70%	0	0.00%	234	100%	1	0.05%	2,163	99.95%
480	4	0.09%	4,387	99.80%	0	0.00%	234	100%	1	0.05%	2,164	100%
470	1	0.02%	4,388	99.82%	0	0.00%	234	100%	0	0.00%	2,164	100%
460	2	0.05%	4,390	99.86%	0	0.00%	234	100%	0	0.00%	2,164	100%
450	2	0.05%	4,392	99.91%	0	0.00%	234	100%	0	0.00%	2,164	100%
440	1	0.02%	4,393	99.93%	0	0.00%	234	100%	0	0.00%	2,164	100%
430	2	0.05%	4,395	99.98%	0	0.00%	234	100%	0	0.00%	2,164	100%
420	1	0.02%	4,396	100%	0	0.00%	234	100%	0	0.00%	2,164	100%

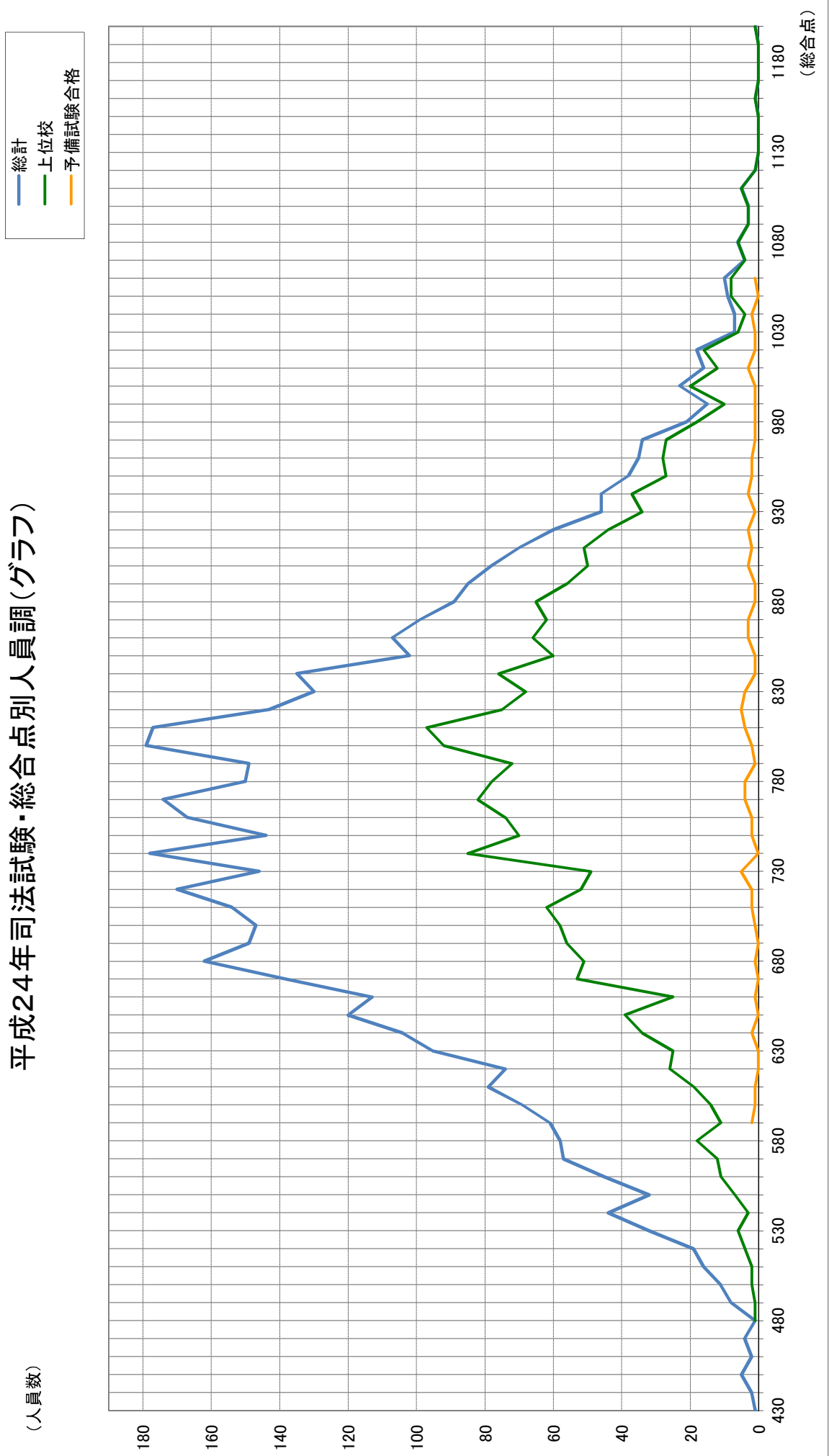
平成25年司法試験・総合点別人員調(グラフ)



平成25年 司法試験 総合点別人員調  
 (予備試験合格者、合格率が全体の合格率以上の法科大学院14校の受験者(上位校))

総合点	総計				予備試験合格				上位校			
	人員	人員割合	累計	累計割合	人員	人員割合	累計	累計割合	人員	人員割合	累計	累計割合
1180	1	0.02%	1	0.02%	0	0.00%	0	0.00%	0	0.00%	0	0.00%
1170	0	0.00%	1	0.02%	0	0.00%	0	0.00%	0	0.00%	0	0.00%
1160	0	0.00%	1	0.02%	0	0.00%	0	0.00%	0	0.00%	0	0.00%
1150	0	0.00%	1	0.02%	0	0.00%	0	0.00%	0	0.00%	0	0.00%
1140	2	0.04%	3	0.06%	0	0.00%	0	0.00%	2	0.09%	2	0.09%
1130	0	0.00%	3	0.06%	0	0.00%	0	0.00%	0	0.00%	2	0.09%
1120	1	0.02%	4	0.08%	0	0.00%	0	0.00%	1	0.05%	3	0.14%
1110	1	0.02%	5	0.10%	1	0.61%	1	0.61%	0	0.00%	3	0.14%
1100	4	0.08%	9	0.19%	0	0.00%	1	0.61%	4	0.18%	7	0.32%
1090	3	0.06%	12	0.25%	1	0.61%	2	1.21%	2	0.09%	9	0.41%
1080	6	0.12%	18	0.37%	0	0.00%	2	1.21%	6	0.27%	15	0.68%
1070	9	0.19%	27	0.56%	1	0.61%	3	1.82%	7	0.32%	22	1.00%
1060	6	0.12%	33	0.68%	0	0.00%	3	1.82%	5	0.23%	27	1.22%
1050	7	0.14%	40	0.82%	3	1.82%	6	3.64%	4	0.18%	31	1.40%
1040	7	0.14%	47	0.97%	0	0.00%	6	3.64%	5	0.23%	36	1.63%
1030	10	0.21%	57	1.17%	0	0.00%	6	3.64%	9	0.41%	45	2.04%
1020	11	0.23%	68	1.40%	1	0.61%	7	4.24%	9	0.41%	54	2.44%
1010	21	0.43%	89	1.83%	4	2.42%	11	6.67%	15	0.68%	69	3.12%
1000	19	0.39%	108	2.22%	3	1.82%	14	8.48%	12	0.54%	81	3.66%
990	27	0.56%	135	2.78%	5	3.03%	19	11.52%	17	0.77%	98	4.43%
980	32	0.66%	167	3.44%	2	1.21%	21	12.73%	24	1.09%	122	5.52%
970	50	1.03%	217	4.47%	6	3.64%	27	16.36%	37	1.67%	159	7.19%
960	28	0.58%	245	5.04%	2	1.21%	29	17.58%	23	1.04%	182	8.23%
950	33	0.68%	278	5.72%	3	1.82%	32	19.39%	26	1.18%	208	9.41%
940	43	0.89%	321	6.61%	3	1.82%	35	21.21%	31	1.40%	239	10.81%
930	51	1.05%	372	7.66%	2	1.21%	37	22.42%	34	1.54%	273	12.35%
920	70	1.44%	442	9.10%	8	4.85%	45	27.27%	49	2.22%	322	14.56%
910	60	1.24%	502	10.33%	2	1.21%	47	28.48%	47	2.13%	369	16.69%
900	70	1.44%	572	11.77%	6	3.64%	53	32.12%	54	2.44%	423	19.13%
890	66	1.36%	638	13.13%	4	2.42%	57	34.55%	44	1.99%	467	21.12%
880	78	1.61%	716	14.74%	1	0.61%	58	35.15%	52	2.35%	519	23.47%
870	101	2.08%	817	16.82%	9	5.45%	67	40.61%	61	2.76%	580	26.23%
860	115	2.37%	932	19.18%	5	3.03%	72	43.64%	70	3.17%	650	29.40%
850	114	2.35%	1,046	21.53%	5	3.03%	77	46.67%	78	3.53%	728	32.93%
840	121	2.49%	1,167	24.02%	6	3.64%	83	50.30%	75	3.39%	803	36.32%
830	132	2.72%	1,299	26.74%	7	4.24%	90	54.55%	68	3.08%	871	39.39%
820	142	2.92%	1,441	29.66%	3	1.82%	93	56.36%	77	3.48%	948	42.88%
810	129	2.66%	1,570	32.32%	5	3.03%	98	59.39%	74	3.35%	1,022	46.22%
800	130	2.68%	1,700	34.99%	10	6.06%	108	65.45%	60	2.71%	1,082	48.94%
790	153	3.15%	1,853	38.14%	8	4.85%	116	70.30%	66	2.99%	1,148	51.92%
780	196	4.03%	2,049	42.18%	4	2.42%	120	72.73%	104	4.70%	1,252	56.63%
770	172	3.54%	2,221	45.72%	2	1.21%	122	73.94%	83	3.75%	1,335	60.38%
760	172	3.54%	2,393	49.26%	2	1.21%	124	75.15%	84	3.80%	1,419	64.18%
750	166	3.42%	2,559	52.68%	2	1.21%	126	76.36%	59	2.67%	1,478	66.85%
740	165	3.40%	2,724	56.07%	4	2.42%	130	78.79%	78	3.53%	1,556	70.38%
730	165	3.40%	2,889	59.47%	4	2.42%	134	81.21%	69	3.12%	1,625	73.50%
720	179	3.68%	3,068	63.15%	6	3.64%	140	84.85%	67	3.03%	1,692	76.53%
710	162	3.33%	3,230	66.49%	3	1.82%	143	86.67%	59	2.67%	1,751	79.19%
700	150	3.09%	3,380	69.58%	5	3.03%	148	89.70%	48	2.17%	1,799	81.37%
690	133	2.74%	3,513	72.31%	6	3.64%	154	93.33%	50	2.26%	1,849	83.63%
680	119	2.45%	3,632	74.76%	0	0.00%	154	93.33%	41	1.85%	1,890	85.48%
670	129	2.66%	3,761	77.42%	4	2.42%	158	95.76%	41	1.85%	1,931	87.34%
660	131	2.70%	3,892	80.12%	3	1.82%	161	97.58%	41	1.85%	1,972	89.19%
650	110	2.26%	4,002	82.38%	0	0.00%	161	97.58%	34	1.54%	2,006	90.73%
640	106	2.18%	4,108	84.56%	2	1.21%	163	98.79%	27	1.22%	2,033	91.95%
630	102	2.10%	4,210	86.66%	0	0.00%	163	98.79%	33	1.49%	2,066	93.44%
620	93	1.91%	4,303	88.58%	1	0.61%	164	99.39%	20	0.90%	2,086	94.35%
610	80	1.65%	4,383	90.22%	1	0.61%	165	100%	25	1.13%	2,111	95.48%
600	78	1.61%	4,461	91.83%	0	0.00%	165	100%	20	0.90%	2,131	96.38%
590	67	1.38%	4,528	93.21%	0	0.00%	165	100%	12	0.54%	2,143	96.92%
580	62	1.28%	4,590	94.48%	0	0.00%	165	100%	14	0.63%	2,157	97.56%
570	54	1.11%	4,644	95.59%	0	0.00%	165	100%	11	0.50%	2,168	98.06%
560	42	0.86%	4,686	96.46%	0	0.00%	165	100%	10	0.45%	2,178	98.51%
550	32	0.66%	4,718	97.12%	0	0.00%	165	100%	8	0.36%	2,186	98.87%
540	31	0.64%	4,749	97.76%	0	0.00%	165	100%	9	0.41%	2,195	99.28%
530	28	0.58%	4,777	98.33%	0	0.00%	165	100%	5	0.23%	2,200	99.50%
520	20	0.41%	4,797	98.74%	0	0.00%	165	100%	3	0.14%	2,203	99.64%
510	12	0.25%	4,809	98.99%	0	0.00%	165	100%	2	0.09%	2,205	99.73%
500	20	0.41%	4,829	99.40%	0	0.00%	165	100%	1	0.05%	2,206	99.77%
490	9	0.19%	4,838	99.59%	0	0.00%	165	100%	1	0.05%	2,207	99.82%
480	6	0.12%	4,844	99.71%	0	0.00%	165	100%	1	0.05%	2,208	99.86%
470	6	0.12%	4,850	99.84%	0	0.00%	165	100%	3	0.14%	2,211	100%
460	4	0.08%	4,854	99.92%	0	0.00%	165	100%	0	0.00%	2,211	100%
450	2	0.04%	4,856	99.96%	0	0.00%	165	100%	0	0.00%	2,211	100%
440	1	0.02%	4,857	99.98%	0	0.00%	165	100%	0	0.00%	2,211	100%
430	1	0.02%	4,858	100%	0	0.00%	165	100%	0	0.00%	2,211	100%

平成24年司法試験・総合点別人員調(グラフ)



平成24年 司法試験 総合点別人員調  
 (予備試験合格者、平成25年司法試験の合格率が全体の合格率以上の法科大学院14校の受験者(上位校))

総合点	総計				予備試験合格				上位校			
	人員	人員割合	累計	累計割合	人員	人員割合	累計	累計割合	人員	人員割合	累計	累計割合
1200	1	0.02%	1	0.02%	0	0.00%	0	0.00%	1	0.04%	1	0.04%
1190	0	0.00%	1	0.02%	0	0.00%	0	0.00%	0	0.00%	1	0.04%
1180	0	0.00%	1	0.02%	0	0.00%	0	0.00%	0	0.00%	1	0.04%
1170	0	0.00%	1	0.02%	0	0.00%	0	0.00%	0	0.00%	1	0.04%
1160	1	0.02%	2	0.04%	0	0.00%	0	0.00%	1	0.04%	2	0.09%
1150	0	0.00%	2	0.04%	0	0.00%	0	0.00%	0	0.00%	2	0.09%
1140	0	0.00%	2	0.04%	0	0.00%	0	0.00%	0	0.00%	2	0.09%
1130	0	0.00%	2	0.04%	0	0.00%	0	0.00%	0	0.00%	2	0.09%
1120	1	0.02%	3	0.06%	0	0.00%	0	0.00%	1	0.04%	3	0.13%
1110	5	0.10%	8	0.16%	0	0.00%	0	0.00%	5	0.22%	8	0.36%
1100	3	0.06%	11	0.23%	0	0.00%	0	0.00%	3	0.13%	11	0.49%
1090	3	0.06%	14	0.29%	0	0.00%	0	0.00%	3	0.13%	14	0.62%
1080	6	0.12%	20	0.41%	0	0.00%	0	0.00%	6	0.27%	20	0.89%
1070	4	0.08%	24	0.49%	0	0.00%	0	0.00%	4	0.18%	24	1.07%
1060	10	0.20%	34	0.70%	1	1.19%	1	1.19%	8	0.36%	32	1.43%
1050	9	0.18%	43	0.88%	0	0.00%	1	1.19%	8	0.36%	40	1.78%
1040	7	0.14%	50	1.02%	2	2.38%	3	3.57%	4	0.18%	44	1.96%
1030	7	0.14%	57	1.17%	1	1.19%	4	4.76%	6	0.27%	50	2.23%
1020	18	0.37%	75	1.54%	1	1.19%	5	5.95%	16	0.71%	66	2.94%
1010	16	0.33%	91	1.86%	3	3.57%	8	9.52%	12	0.53%	78	3.48%
1000	23	0.47%	114	2.33%	1	1.19%	9	10.71%	20	0.89%	98	4.37%
990	15	0.31%	129	2.64%	1	1.19%	10	11.90%	10	0.45%	108	4.81%
980	21	0.43%	150	3.07%	1	1.19%	11	13.10%	18	0.80%	126	5.62%
970	34	0.70%	184	3.77%	1	1.19%	12	14.29%	27	1.20%	153	6.82%
960	35	0.72%	219	4.48%	2	2.38%	14	16.67%	28	1.25%	181	8.07%
950	38	0.78%	257	5.26%	2	2.38%	16	19.05%	27	1.20%	208	9.27%
940	46	0.94%	303	6.21%	3	3.57%	19	22.62%	37	1.65%	245	10.92%
930	46	0.94%	349	7.15%	1	1.19%	20	23.81%	34	1.52%	279	12.44%
920	60	1.23%	409	8.38%	3	3.57%	23	27.38%	44	1.96%	323	14.40%
910	70	1.43%	479	9.81%	2	2.38%	25	29.76%	51	2.27%	374	16.67%
900	78	1.60%	557	11.41%	3	3.57%	28	33.33%	50	2.23%	424	18.90%
890	85	1.74%	642	13.15%	1	1.19%	29	34.52%	56	2.50%	480	21.40%
880	89	1.82%	731	14.97%	1	1.19%	30	35.71%	65	2.90%	545	24.30%
870	99	2.03%	830	17.00%	3	3.57%	33	39.29%	62	2.76%	607	27.06%
860	107	2.19%	937	19.19%	3	3.57%	36	42.86%	66	2.94%	673	30.00%
850	102	2.09%	1,039	21.28%	1	1.19%	37	44.05%	60	2.67%	733	32.68%
840	135	2.76%	1,174	24.04%	1	1.19%	38	45.24%	76	3.39%	809	36.07%
830	130	2.66%	1,304	26.70%	4	4.76%	42	50.00%	68	3.03%	877	39.10%
820	143	2.93%	1,447	29.63%	5	5.95%	47	55.95%	75	3.34%	952	42.44%
810	177	3.62%	1,624	33.26%	4	4.76%	51	60.71%	97	4.32%	1,049	46.77%
800	179	3.67%	1,803	36.92%	2	2.38%	53	63.10%	92	4.10%	1,141	50.87%
790	149	3.05%	1,952	39.98%	1	1.19%	54	64.29%	72	3.21%	1,213	54.08%
780	150	3.07%	2,102	43.05%	4	4.76%	58	69.05%	78	3.48%	1,291	57.56%
770	174	3.56%	2,276	46.61%	4	4.76%	62	73.81%	82	3.66%	1,373	61.21%
760	167	3.42%	2,443	50.03%	2	2.38%	64	76.19%	74	3.30%	1,447	64.51%
750	144	2.95%	2,587	52.98%	2	2.38%	66	78.57%	70	3.12%	1,517	67.63%
740	178	3.65%	2,765	56.63%	0	0.00%	66	78.57%	85	3.79%	1,602	71.42%
730	146	2.99%	2,911	59.61%	5	5.95%	71	84.52%	49	2.18%	1,651	73.61%
720	170	3.48%	3,081	63.10%	2	2.38%	73	86.90%	52	2.32%	1,703	75.93%
710	154	3.15%	3,235	66.25%	2	2.38%	75	89.29%	62	2.76%	1,765	78.69%
700	147	3.01%	3,382	69.26%	1	1.19%	76	90.48%	58	2.59%	1,823	81.28%
690	149	3.05%	3,531	72.31%	0	0.00%	76	90.48%	56	2.50%	1,879	83.77%
680	162	3.32%	3,693	75.63%	1	1.19%	77	91.67%	51	2.27%	1,930	86.05%
670	138	2.83%	3,831	78.46%	0	0.00%	77	91.67%	53	2.36%	1,983	88.41%
660	113	2.31%	3,944	80.77%	1	1.19%	78	92.86%	25	1.11%	2,008	89.52%
650	120	2.46%	4,064	83.23%	0	0.00%	78	92.86%	39	1.74%	2,047	91.26%
640	104	2.13%	4,168	85.36%	2	2.38%	80	95.24%	34	1.52%	2,081	92.78%
630	95	1.95%	4,263	87.30%	0	0.00%	80	95.24%	25	1.11%	2,106	93.89%
620	74	1.52%	4,337	88.82%	0	0.00%	80	95.24%	26	1.16%	2,132	95.05%
610	79	1.62%	4,416	90.44%	1	1.19%	81	96.43%	19	0.85%	2,151	95.90%
600	69	1.41%	4,485	91.85%	1	1.19%	82	97.62%	14	0.62%	2,165	96.52%
590	61	1.25%	4,546	93.10%	2	2.38%	84	100%	11	0.49%	2,176	97.01%
580	58	1.19%	4,604	94.29%	0	0.00%	84	100%	18	0.80%	2,194	97.82%
570	57	1.17%	4,661	95.45%	0	0.00%	84	100%	12	0.53%	2,206	98.35%
560	45	0.92%	4,706	96.38%	0	0.00%	84	100%	11	0.49%	2,217	98.84%
550	32	0.66%	4,738	97.03%	0	0.00%	84	100%	7	0.31%	2,224	99.15%
540	44	0.90%	4,782	97.93%	0	0.00%	84	100%	3	0.13%	2,227	99.29%
530	32	0.66%	4,814	98.59%	0	0.00%	84	100%	6	0.27%	2,233	99.55%
520	19	0.39%	4,833	98.98%	0	0.00%	84	100%	4	0.18%	2,237	99.73%
510	16	0.33%	4,849	99.30%	0	0.00%	84	100%	2	0.09%	2,239	99.82%
500	11	0.23%	4,860	99.53%	0	0.00%	84	100%	2	0.09%	2,241	99.91%
490	8	0.16%	4,868	99.69%	0	0.00%	84	100%	1	0.04%	2,242	99.96%
480	1	0.02%	4,869	99.71%	0	0.00%	84	100%	1	0.04%	2,243	100%
470	4	0.08%	4,873	99.80%	0	0.00%	84	100%	0	0.00%	2,243	100%
460	2	0.04%	4,875	99.84%	0	0.00%	84	100%	0	0.00%	2,243	100%
450	5	0.10%	4,880	99.94%	0	0.00%	84	100%	0	0.00%	2,243	100%
440	2	0.04%	4,882	99.98%	0	0.00%	84	100%	0	0.00%	2,243	100%
430	1	0.02%	4,883	100%	0	0.00%	84	100%	0	0.00%	2,243	100%